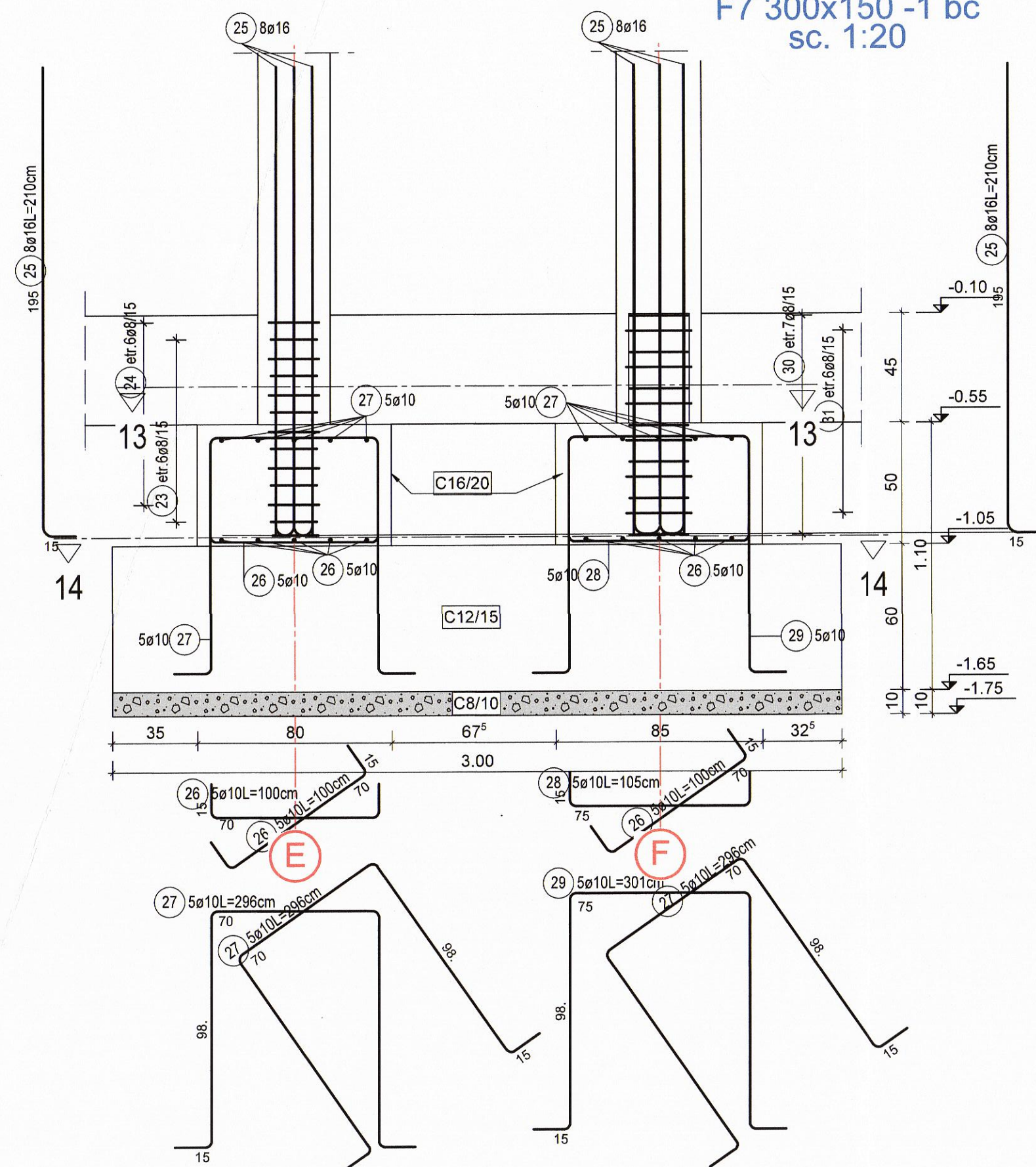
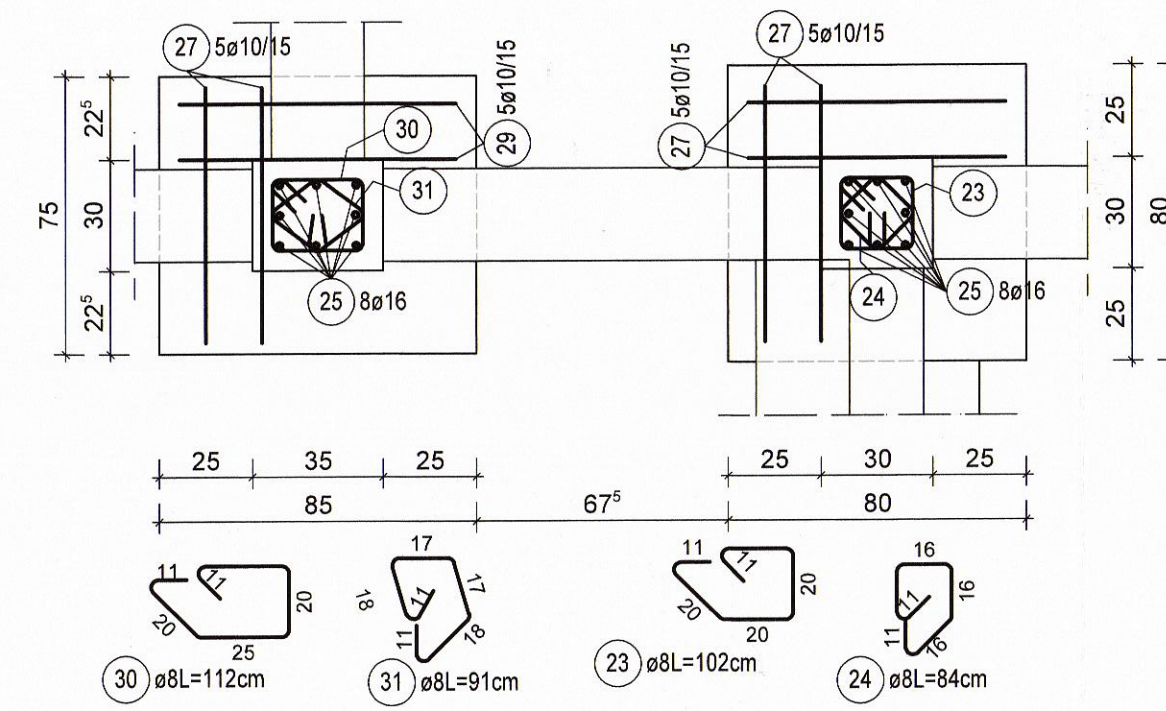


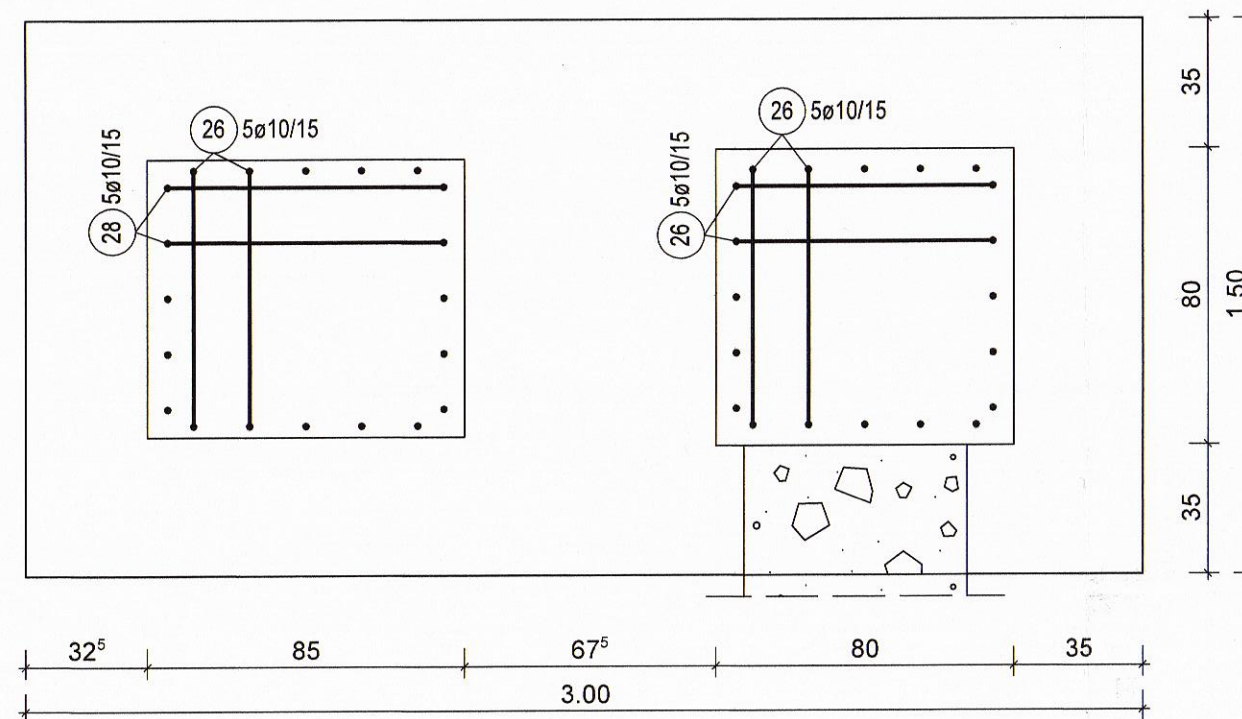
Plan armare fundatii
F7 300x150 -1 bc
sc. 1:20



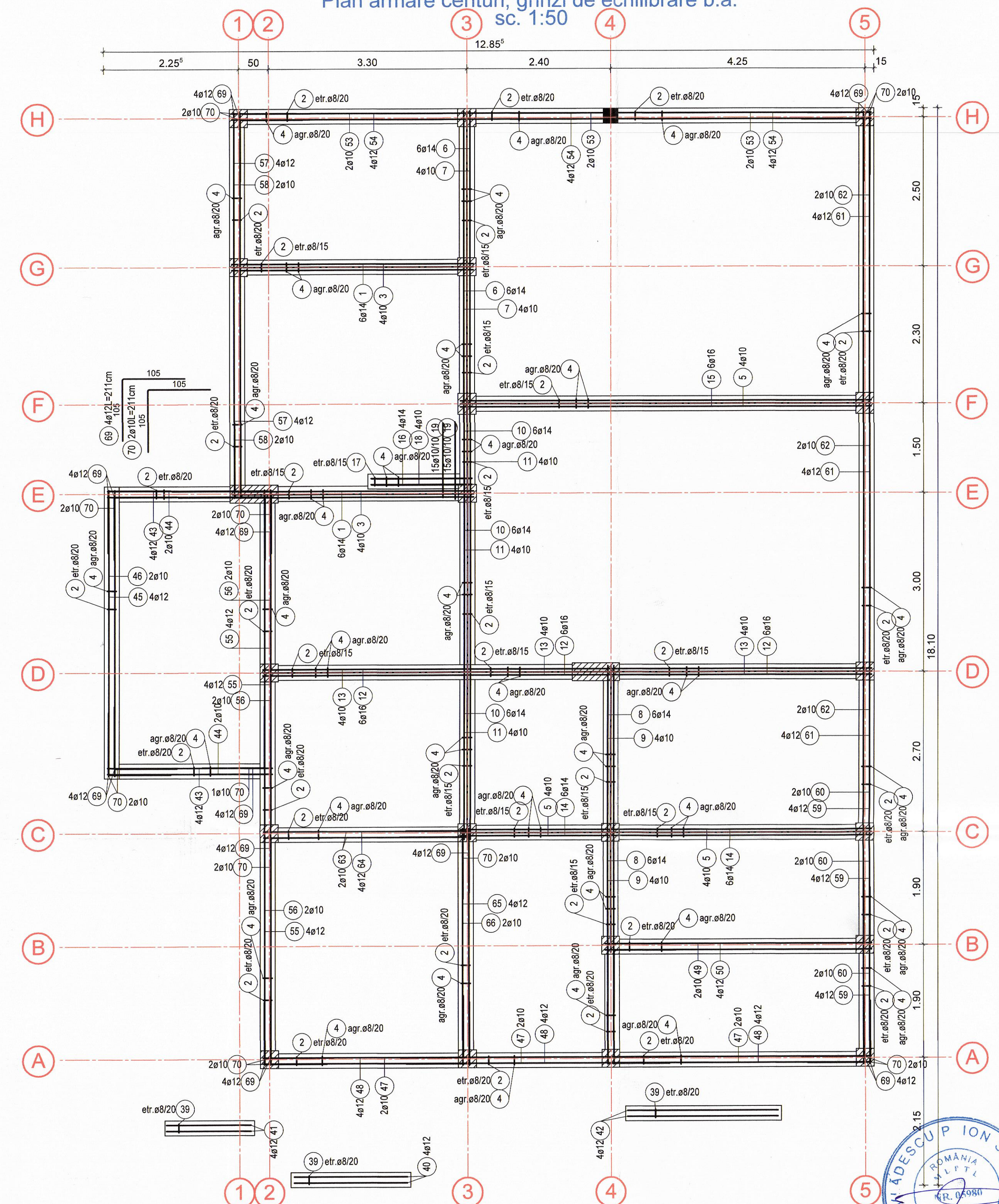
Sectione 13 - 13



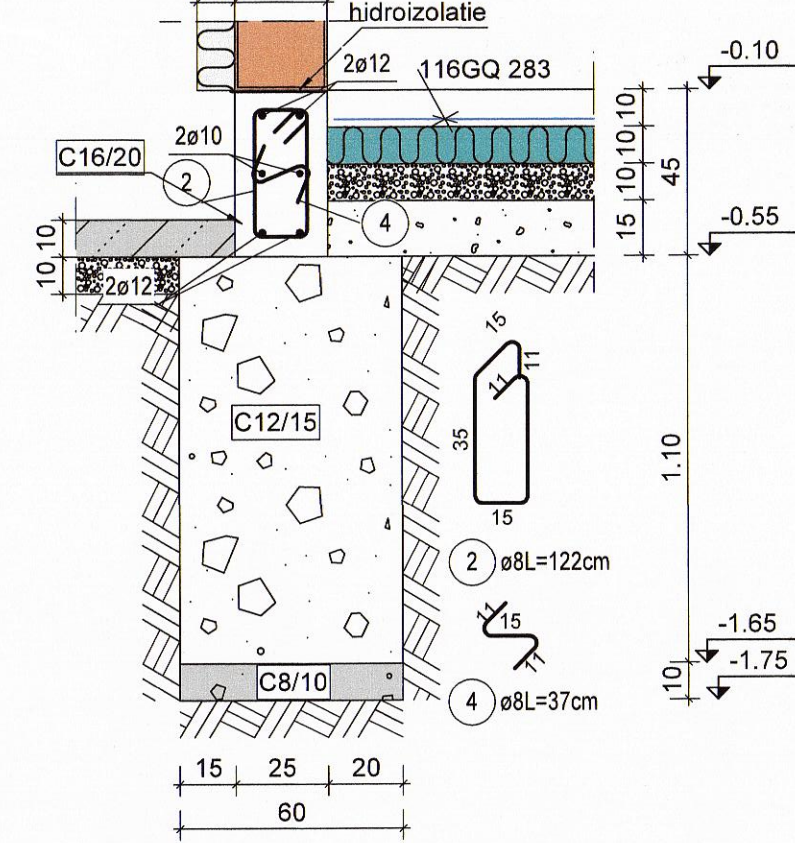
Sectione 14 - 14



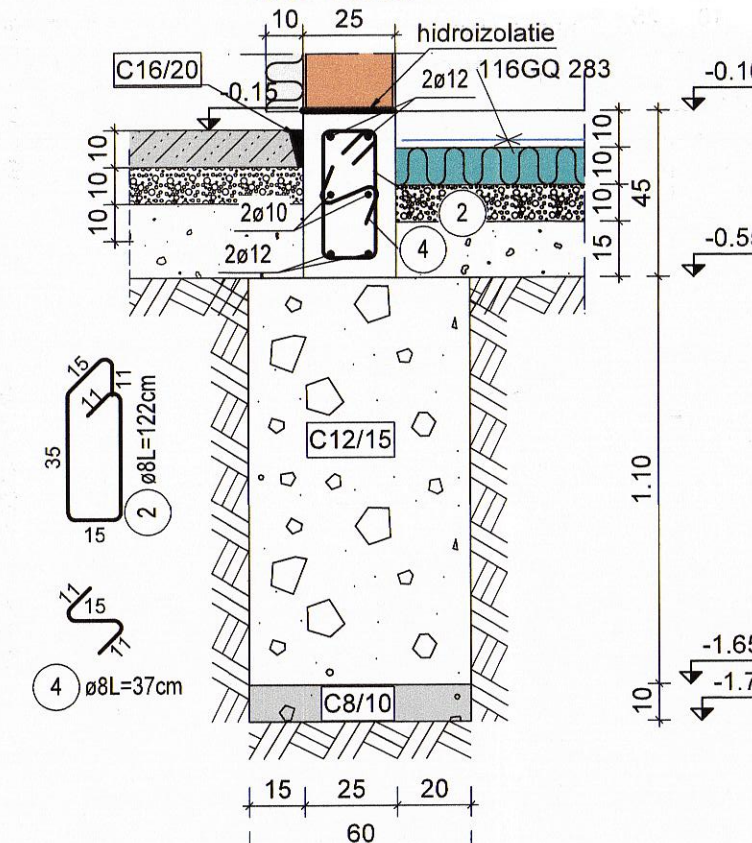
Plan armare centuri, grinzi de echilibrare b.a.
sc. 1:50



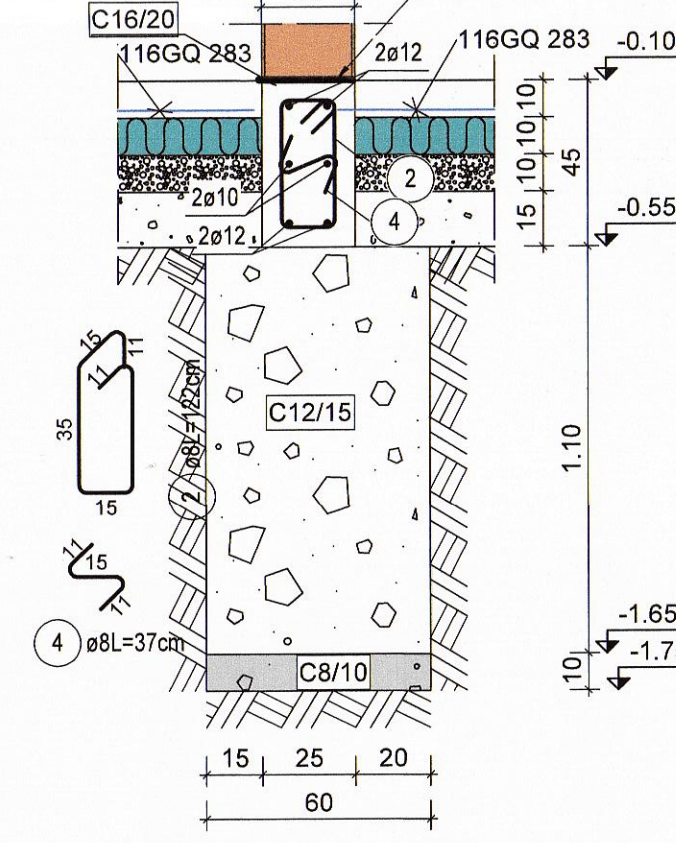
Sectione 1 - 1
sc 1:20



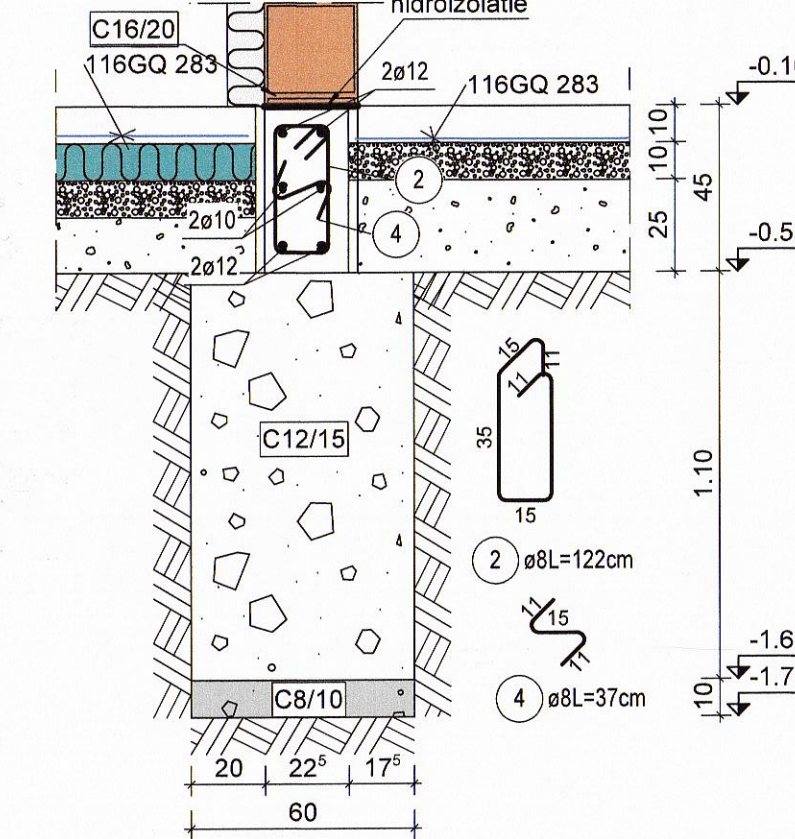
Sectione 1* - 1*
sc 1:20



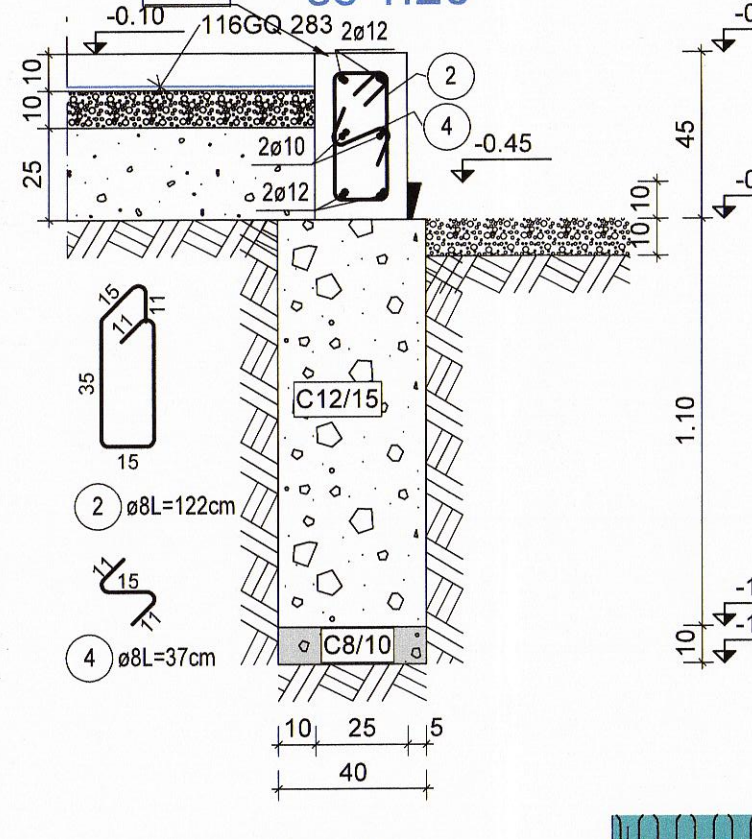
Sectione 2 - 2
sc 1:20



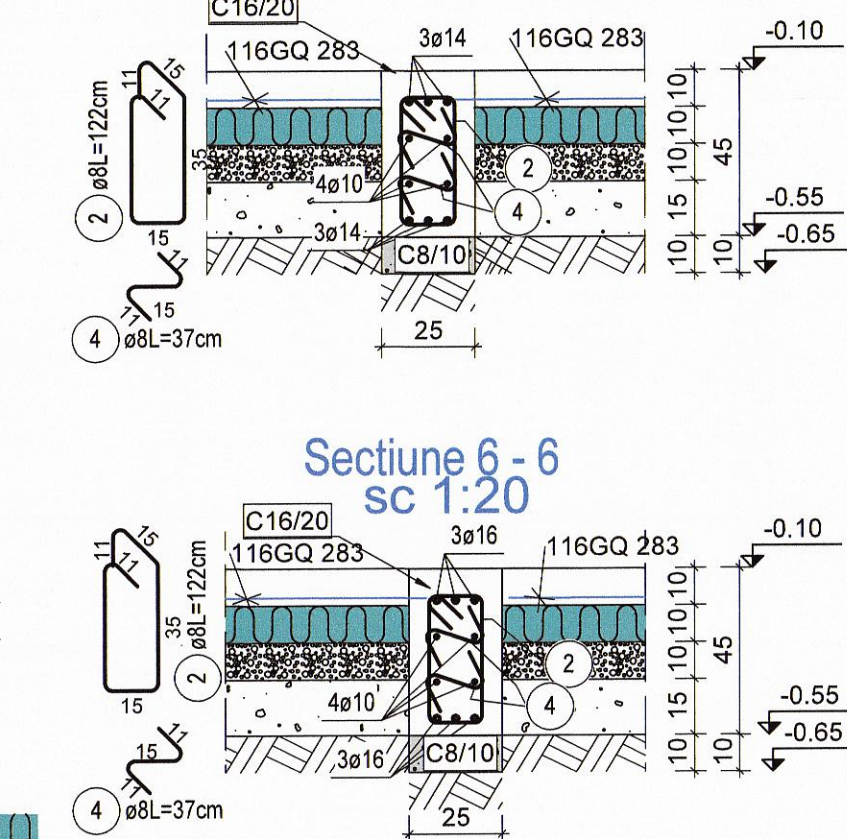
Sectione 3 - 3
sc 1:20



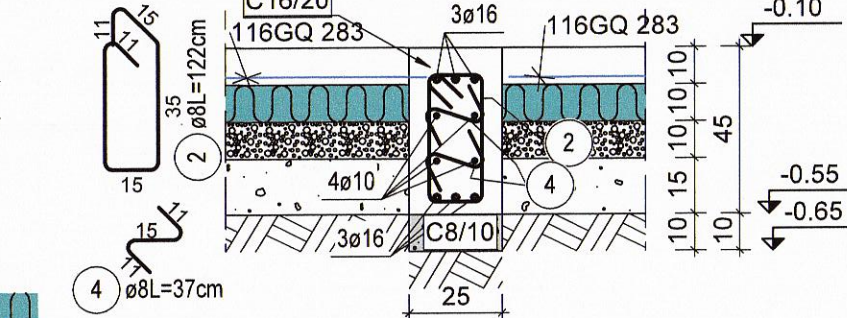
Sectione 4 - 4
sc 1:20



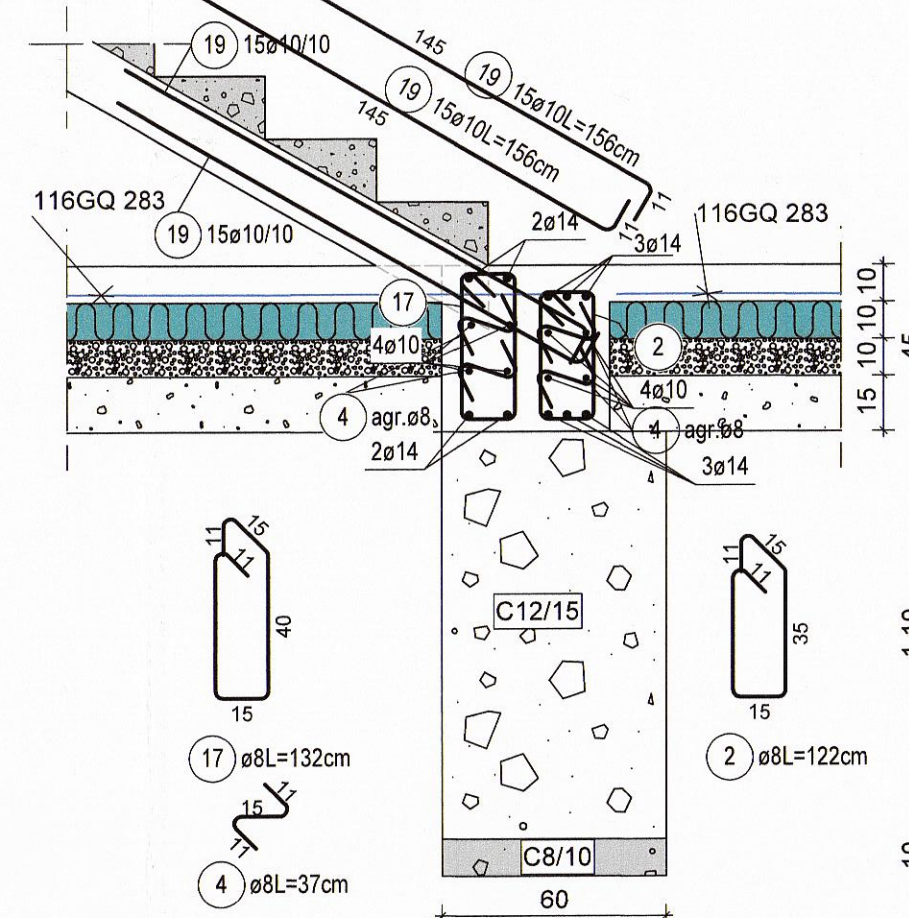
Sectione 5 - 5



Sectione 6 - 6
sc 1:20



Sectione 5* - 5*
sc 1:20



Materiale:

Beton: conform SR EN 206-1

Beton simplu:

C8/10, X0, Cl.0.2%, CEM I 32,5R, A/C = 0.65, S2, Dmax.31

C12/15, X0, Cl.0.2%, CEM I 32,5R, A/C = 0.65, S2, Dmax.16

Beton armat:

C16/20 X0/XC2, Cl.0.2%, CEM II A-S 32,5R, A/C = 0.6, S3,

Dmax.16, doza min de ciment: 260kg/mc

OTEL

BST500S, clasa de ductilitate "C",

STNB- plase sudate

Acop. min - 5cm

Terenul bun de fundare este in stratul de argila prafoasa, maronie,vascoasa
cu pcon=200Kpa, la adancimea Df=-1.00m
Cota de fundare este la -1.20 cm fata de CTA
Dupa realizarea sapaturilor pentru fundatii, inainte de turnarea
betonului, se va solicita prezenta geotehnicianului pentru
verificarea terenului de fundare.
Ultimii 20cm se vor excava inainte de turnarea betonului in fundatii

Categoria de importanta a constructiei, conform HGR 766/1997:C
Clasa de importanta conform P100-1/2013-III.
ag = 0.25g, Tc = 0.7 s.
Clasa de expunere a constructiei : mediu uscat moderat.

se vor citi impreuna plansele R01,R02, R03, R04, R05

	<p>PROIECTARE, CONSULTANTA, ASISTENTA TEHNICA IN DOMENIILE CONSTRUCTII CIVILE, INDUSTRIALE SI AGRICOLE</p>	<p>ROMANIA Județul Argeș Comuna Târgușor Satul Bărbăntuș Strada 120699</p>
<p>MANAGER PROIECT Ing. GHEORGHE JUNE</p>	<p>PROIECTAT Ing. Rania Cristinel Nicolae</p>	<p>DESENAT Ing. Rania Cristinel Nicolae</p>

Plan armare fundatii izolate
b.a.: F7
Plan armare elevatii
detalii armare fundatii:
1-1, 2-2, 3-3, 4-4, 5-5, 6-6